

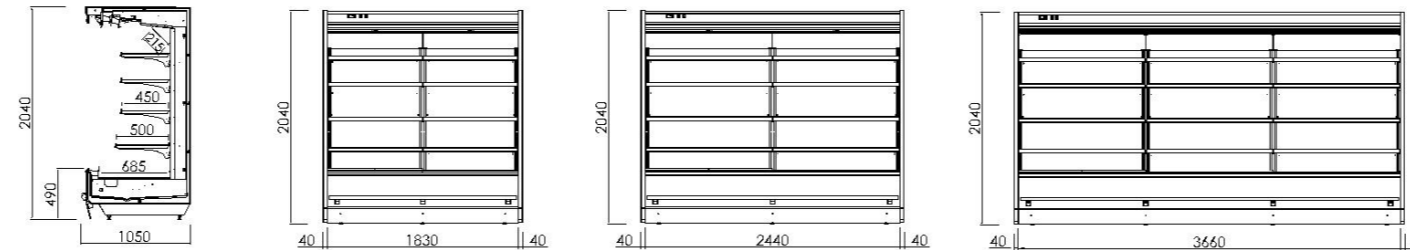
Multi-deck Open Showcase Height 2,040mm Type



Dairy Products, Drinks 3 to 7°C

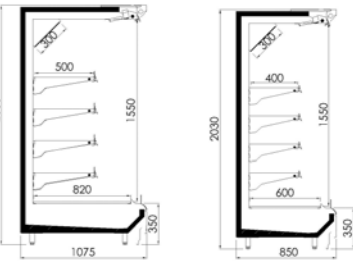
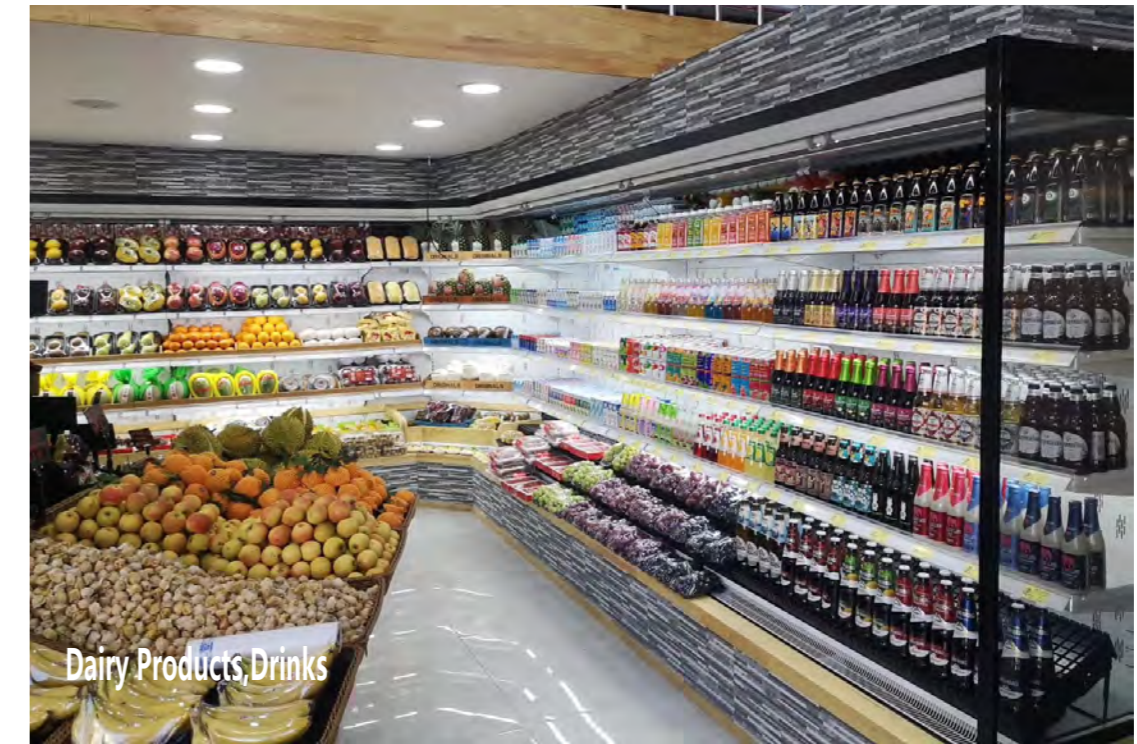


Available in depths of 1,050 and 880mm. Also available with sliding door or opening door.



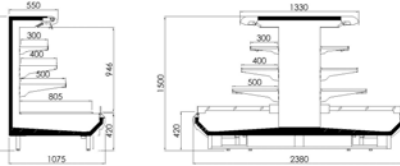
Remote Open Showcase			
Model	SXW-6G/R	SXW-8G/R	SXW-CG/R
Dimension (L*W*H) mm	1830*1050*2040	2440*1050*2040	3660*1050*2040
Temperature	G : (-1~7°C) For Vegetables and Fruits R : (-1~5°C) For Fresh Meat and Fresh Fish		
Climate	25°C 60%RH		
Refrigerant	R404a		
Net Storage Capacity	1340L	1790L	2680L
Input Power	270W	350W	500W
Voltage/Frequency	230V 50Hz		
Cooling Capacity	G: 2600W@-10°Cte R: 2800W@-10°Cte	G: 3300W@-10°Cte R: 3600W@-10°Cte	G: 5000W@-10°Cte R: 5500W@-10°Cte
Net weight	250Kg	350Kg	500Kg

Meat and Fish -2 to 2°C



- 06FT - 1875mm
- 08FT - 2500mm
- 12FT - 3750mm
- D-1075mm/850mm
- H-2030mm

Semi Multi-deck Open Showcase



- 06FT - 1875mm
- 08FT - 2500mm
- 12FT - 3750mm
- D- 1075mm/850mm
- H-1350/1500/1700mm

Island Type Showcase with Slide Glass

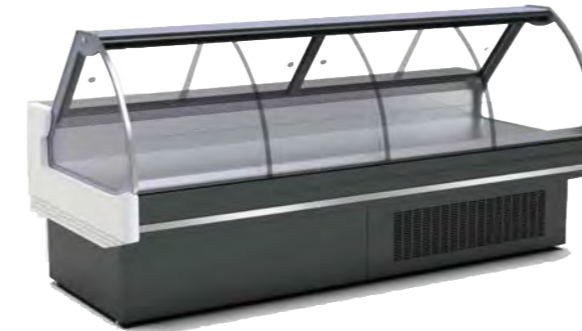


Frozen Foods and Ice Cream

🌡️ -25 to -18°C

Model	HR-5	HR-6	HR-7	HR-8	HR-6D
Dimension (L*W*H) mm	1454*816*900	1864*816*900	2104*816*900	2504*816*900	1864*816*900
Net storage capacity	397L	540L	625L	765L	540L
Input Power	270W	400W	450W	500W	403W

Plug-in Multideck & Service Counter



Vegetables and Fruits 🌡️ 5 to 10°C

Model	VICT125	VICT188	VICT250
Dimension (L*W*H) mm	1310*770*1985	1935*770*1985	2560*770*1985
Net storage capacity	500L	700L	1100L
Input Power	900W	2050W	2300W

Meat and Fish 🌡️ 2 to 8°C

Model	HICC188AT	HICC250AT	HICC375AT
Dimension (L*W*H) mm	1975*1120*1250	2600*1120*1250	3850*1120*1250
Net storage capacity	250L	330L	500L
Input Power	600W	660W	900W



Meat and Fish 🌡️ 2 to 8°C

Model	HICM188	HICM250	HICM375
Dimension (L*W*H) mm	1975*1120*900	2600*1120*900	3850*1120*900
Net storage capacity	250L	330L	500L
Input Power	500W	800W	1400W

Meat and Fish 🌡️ 2 to 8°C

Model	HICC188CT	HICC250CT	HICC375CT
Dimension (L*W*H) mm	1955*1130*1210	2580*1130*1210	3830*1130*1210
Net storage capacity	250L	330L	500L
Input Power	600W	660W	900W

Ascco®



WFF Refrigeration Sales And Service Sdn Bhd

🌐 www.wenho.com.my

✉️ wffref@yahoo.com

www.wenho.com.my